

PROFESSIONAL DEVELOPMENT WITH TEACHING ARTIST JOHN BERTLES

Explore the intersection of Arts, Science and Environment with musical instruments made from reused/repurposed materials. In-person or virtual professional development workshops for educators and artists, with curriculum connections to Literacy, STEAM, Arts Integration and NextGen Science!



Arts-Integration Workshops for Educators - In-Person or Virtual - [SEE A 2:00 VIDEO](#)

Building Musical Instruments from Reused/ Repurposed Materials - Learn how to build a variety of simple but great-sounding musical instruments from found-object materials, explore the science of how they work, and discover creative ways to use them to enhance classroom and curricular activities.



Musical Tellings - Enhancing Literacy with Soundscapes and Musical Stories - Stories are so much more fun - and fun to create - when combined with music and simple instruments! No musical experience or expertise needed - this workshop is designed for all educators! [SEE VIDEO](#)

The Sound of Science - Explore STEAM and Arts Integration concepts with hands-on instrument-building. A lively mix of curriculum-based science, amazing corroborative demos and videos, and simple classroom-built instruments.

Paul Klee and Imagination - This workshop builds higher-function creativity through imagination! We'll explore the music-inspired paintings of the Bauhaus artist Paul Klee, compose music inspired by these paintings, and then perform the student compositions with simple and student-built instruments.

ALL PROGRAMS

In-person 3 or 6 hours - [contact me](#)

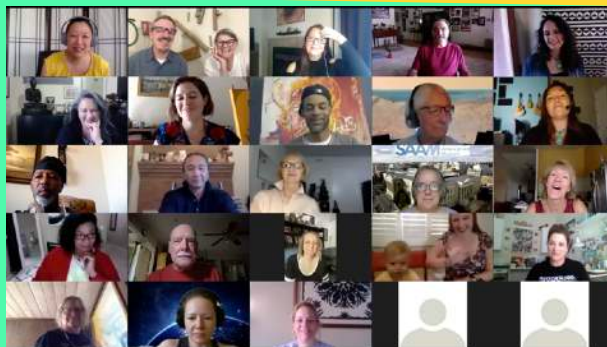
Virtual 1.5 or 3 hours \$945/1260

See what it looks like
[HERE](#)

John Bertles is an educator, composer and instrument-builder. He focuses on the intersection of science, music and the environment by building musical instruments from reused/repurposed materials. A



facilitator for The John F. Kennedy Center for the Performing Arts National Touring Workshops for Teachers since 2006, he is also the founder and co-director of Bash the Trash Environmental Arts LLC, an educational performance ensemble.



Prices start at \$735 for a virtual 60" program;
Contact me to discuss prices and possibilities!

CONTACT
www.johnbertles.com
johnbertlesbtt@mac.com
914.478.1103